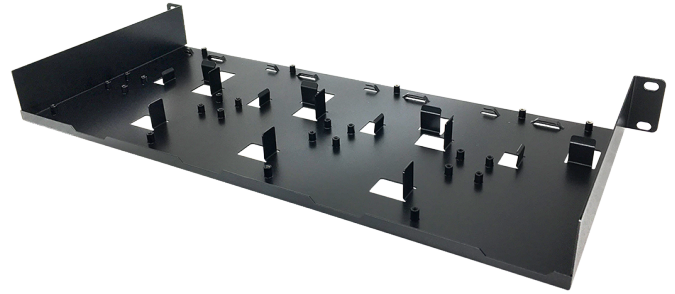


# CH-100-V2

## 19", 1U 4-bay Rack Mount Chassis



### Technical Specifications

Model	CH-100-V2
Construction	SPCC
Dimensions (L x W x H)	478x190x44 (mm)
Weight	1KG
Supported Models	EPoC : 4x XE10-110-RX with 65W Power Adapter EPoT : 4x TE10-110-RX with 65W Power Adapter EPo2 : 4x 2E10-110-RX with 65W Power Adapter

