



DS-6700HUHI Series Encoder

Quick Start Guide

Quick Start Guide

COPYRIGHT ©2019 Hangzhou Hikvision Digital Technology Co., Ltd.

ALL RIGHTS RESERVED.

Any and all information, including, among others, wordings, pictures, graphs are the properties of Hangzhou Hikvision Digital Technology Co., Ltd. or its subsidiaries (hereinafter referred to be “Hikvision”). This user manual (hereinafter referred to be “the Manual”) cannot be reproduced, changed, translated, or distributed, partially or wholly, by any means, without the prior written permission of Hikvision. Unless otherwise stipulated, Hikvision does not make any warranties, guarantees or representations, express or implied, regarding to the Manual.

About this Manual

This Manual is applicable to DS-6700HUHI Series Encoder.

The Manual includes instructions for using and managing the product. Pictures, charts, images and all other information hereinafter are for description and explanation only. The information contained in the Manual is subject to change, without notice, due to firmware updates or other reasons. Please find the latest version in the company website (<http://overseas.hikvision.com/en/>).

Please use this user manual under the guidance of professionals.

Trademarks Acknowledgement

HIKVISION and other Hikvision’s trademarks and logos are the properties of Hikvision in various jurisdictions.

Other trademarks and logos mentioned below are the properties of their respective owners.

Legal Disclaimer

TO THE MAXIMUM EXTENT PERMITTED BY APPLICABLE LAW, THE PRODUCT DESCRIBED, WITH ITS HARDWARE, SOFTWARE AND FIRMWARE, IS PROVIDED “AS IS”, WITH ALL FAULTS AND ERRORS, AND HIKVISION MAKES NO WARRANTIES, EXPRESS OR IMPLIED, INCLUDING WITHOUT LIMITATION, MERCHANTABILITY, SATISFACTORY QUALITY, FITNESS FOR A PARTICULAR PURPOSE, AND NON-INFRINGEMENT OF THIRD PARTY. IN NO EVENT WILL HIKVISION, ITS DIRECTORS, OFFICERS, EMPLOYEES, OR AGENTS BE LIABLE TO YOU FOR ANY SPECIAL, CONSEQUENTIAL, INCIDENTAL, OR INDIRECT DAMAGES, INCLUDING, AMONG OTHERS, DAMAGES FOR LOSS OF BUSINESS PROFITS, BUSINESS INTERRUPTION, OR LOSS OF DATA OR DOCUMENTATION, IN CONNECTION WITH THE USE OF THIS PRODUCT, EVEN IF HIKVISION HAS BEEN ADVISED OF THE POSSIBILITY OF SUCH DAMAGES.

REGARDING TO THE PRODUCT WITH INTERNET ACCESS, THE USE OF PRODUCT SHALL BE WHOLLY AT YOUR OWN RISKS. HIKVISION SHALL NOT TAKE ANY RESPONSIBILITIES FOR ABNORMAL OPERATION, PRIVACY LEAKAGE OR OTHER DAMAGES RESULTING FROM CYBER ATTACK, HACKER ATTACK, VIRUS INSPECTION, OR OTHER INTERNET SECURITY RISKS; HOWEVER, HIKVISION WILL PROVIDE TIMELY TECHNICAL SUPPORT IF REQUIRED.

SURVEILLANCE LAWS VARY BY JURISDICTION. PLEASE CHECK ALL RELEVANT LAWS IN YOUR JURISDICTION BEFORE USING THIS PRODUCT IN ORDER TO ENSURE THAT YOUR USE CONFORMS THE APPLICABLE LAW. HIKVISION SHALL NOT BE LIABLE IN THE EVENT THAT THIS PRODUCT IS USED WITH ILLEGITIMATE PURPOSES.

IN THE EVENT OF ANY CONFLICTS BETWEEN THIS MANUAL AND THE APPLICABLE LAW, THE LATER PREVAILS.

Regulatory Information

FCC Information

Please take attention that changes or modification not expressly approved by the party responsible for compliance could void the user's authority to operate the equipment.

FCC compliance: This equipment has been tested and found to comply with the limits for a Class A digital device, pursuant to part 15 of the FCC Rules. These limits are designed to provide reasonable protection against harmful interference when the equipment is operated in a commercial environment. This equipment generates, uses, and can radiate radio frequency energy and, if not installed and used in accordance with the instruction manual, may cause harmful interference to radio communications. Operation of this equipment in a residential area is likely to cause harmful interference in which case the user will be required to correct the interference at his own expense.

FCC Conditions

This device complies with part 15 of the FCC Rules. Operation is subject to the following two conditions:

1. This device may not cause harmful interference.
2. This device must accept any interference received, including interference that may cause undesired operation.

EU Conformity Statement



This product and - if applicable - the supplied accessories too are marked with "CE" and comply therefore with the applicable harmonized European standards listed under the EMC Directive 2014/30/EU, the LVD Directive 2014/35/EU, the RoHS Directive 2011/65/EU.



2012/19/EU (WEEE directive): Products marked with this symbol cannot be disposed of as unsorted municipal waste in the European Union. For proper recycling, return this product to your local supplier upon the purchase of equivalent new equipment, or dispose of it at designated collection points. For more information see: www.recyclethis.info



2006/66/EC (battery directive): This product contains a battery that cannot be disposed of as unsorted municipal waste in the European Union. See the product documentation for specific battery information. The battery is marked with this symbol, which may include lettering to indicate cadmium (Cd), lead (Pb), or mercury (Hg). For proper recycling, return the battery to your supplier or to a designated collection point. For more information see: www.recyclethis.info

Industry Canada ICES-003 Compliance

This device meets the CAN ICES-3 (A)/NMB-3(A) standards requirements.




Applicable Models

This manual is applicable to the models listed in the following table.

Series	Model
DS-6700HUHI	DS-6701HUHI
	DS-6704HUHI

Symbol Conventions

The symbols that may be found in this document are defined as follows.

Symbol	Description
	Provides additional information to emphasize or supplement important points of the main text.
	Indicates a potentially hazardous situation, which if not avoided, could result in equipment damage, data loss, performance degradation, or unexpected results.
	Follow these precautions to prevent potential injury or material damage.



Warnings

- Proper configuration of all passwords and other security settings is the responsibility of the installer and/or end-user.
- In the use of the product, you must be in strict compliance with the electrical safety regulations of the nation and region. Please refer to technical specifications for detailed information.
- Input voltage should meet both the SELV (Safety Extra Low Voltage) and the Limited Power Source with 100~240 VAC, 48VDC or 12 VDC according to the IEC60950-1 standard. Please refer to technical specifications for detailed information.
- Do not connect several devices to one power adapter as adapter overload may cause over-heating or a fire hazard.
- Please make sure that the plug is firmly connected to the power socket.
- If smoke, odor or noise rise from the device, turn off the power at once and unplug the power cable, and then please contact the service center.

Preventive and Cautionary Tips

Before connecting and operating your device, please be advised of the following tips:

- Ensure unit is installed in a well-ventilated, dust-free environment.
- Unit is designed for indoor use only.
- Keep all liquids away from the device.
- Ensure environmental conditions meet factory specifications.
- Ensure unit is properly secured to a rack or shelf. Major shocks or jolts to the unit as a result of dropping it may cause damage to the sensitive electronics within the unit.
- Use the device in conjunction with an UPS if possible.
- Power down the unit before connecting and disconnecting accessories and peripherals.
- A factory recommended SD card should be used for this device.
- Improper use or replacement of the battery may result in hazard of explosion. Replace with the same or equivalent type only. Dispose of used batteries according to the instructions provided by the battery manufacturer.

Table of Content

Chapter 1 Panel Description.....	1
1.1 Front Panel.....	1
1.2 Rear Panel.....	2
Chapter 2 Installation.....	3
2.1 Pre-Installation.....	3
2.2 Installation.....	3
Chapter 3 Activation.....	4
3.1 Activating via Web Browser.....	4
3.2 Activating via Client Software.....	4
Chapter 4 Access via Web Browser.....	7
4.1 Login.....	7
4.2 Starting Live View.....	7
4.3 Operating PTZ Control.....	9
4.4 Recording.....	10
4.5 Playback.....	11
4.6 Log.....	12

Chapter 1 Panel Description

1.1 Front Panel

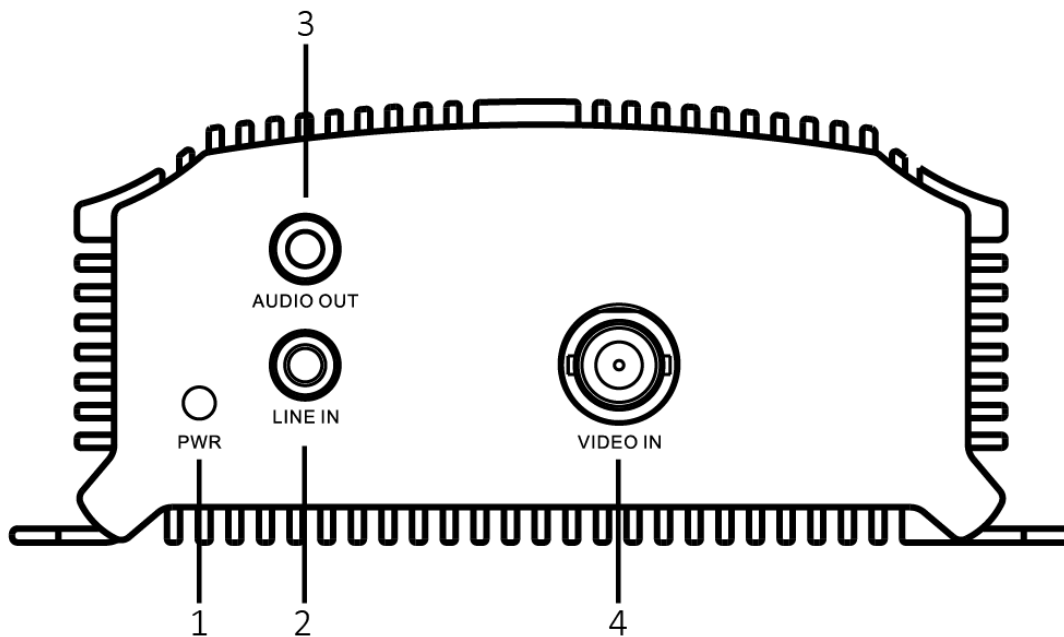


Figure 1. 1 DS-6701HUHI Front Panel

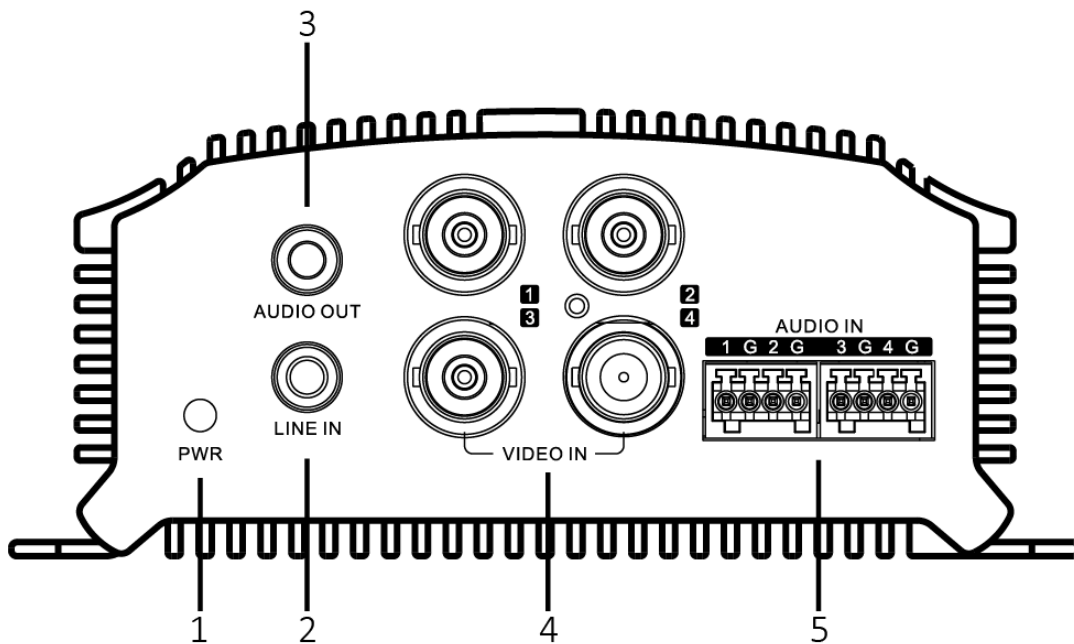


Figure 1. 2 DS-6704HUHI Front Panel

Table 1. 1 Front Panel Description

No.	Description
1	Power Indicator
2	AUDIO OUT
3	LINE IN
4	VIDEO IN
5	AUDIO IN

1.2 Rear Panel

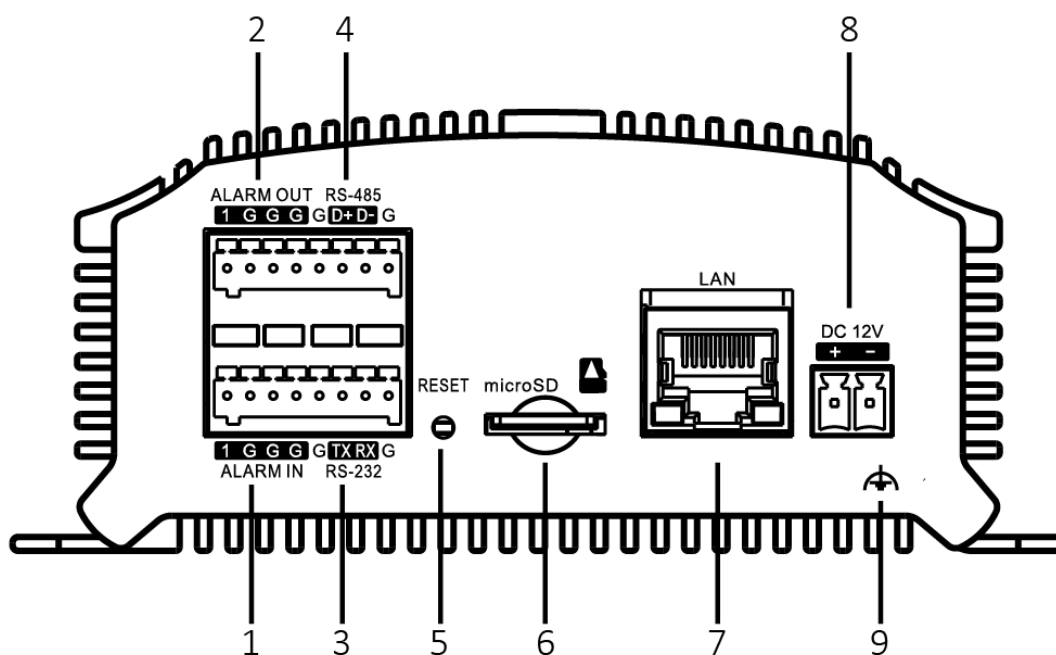


Figure 1. 3 DS-6701HUHI Rear Panel



The rear panel of DS-6704HUHI provides 4 alarm in and 2 alarm out interfaces.

Table 1. 2 Rear Panel Description

No.	Description
1	Alarm In
2	Alarm Out
3	RS-232 Serial Interface
4	RS-485 Serial Interface
5	RESET Button
6	Micro SD Card Slot
7	LAN Network Interface
8	12 VDC Power Input
9	GND

Chapter 2 Installation

2.1 Pre-Installation

The DS-6700HUHI Series Encoder is advanced surveillance equipment that should be installed with care. Please take the following precautionary steps into consideration before installing the encoder.

1. Keep all liquids away from the Encoder.
2. Install the Encoder in a well-ventilated and dust-free area.
3. Ensure environmental conditions meet factory specifications.
4. Install a manufacturer recommended SD card.

2.2 Installation

During the installation of the Encoder:

1. Use brackets for rack mounting.
2. Ensure there is ample room for audio and video cables.
3. When installing cables, ensure that the bend radius of the cables are no less than five times than its diameter.
4. Connect both the alarm and RS-485 cable.
5. Allow at least 2cm (≈ 0.75 ") of space between racks mounted devices.
6. Ensure the Encoder is grounded.
7. Environmental temperature should be within the range of -10°C to 55°C , 14°F to 131°F .
8. Environmental humidity should be within the range of 10% to 90%.

Chapter 3 Activation

3.1 Activating via Web Browser

Steps:

1. Power on the encoder, and connect the encoder to the network.
2. Input the IP address into the address bar of the web browser, and click Enter to enter the activation interface.



The default IP address of the network encoder is 192.168.1.64. You are recommended to change the default IP address after your access.

A screenshot of the web browser's activation interface. The title bar says "Activation". There are three input fields: "User Name" with the value "admin", "Password" with a masked password and a green checkmark, and "Confirm" with a masked password and a green checkmark. Below the password field is a strength indicator showing a full green bar and the word "Strong". A text box below the strength indicator reads: "Valid password range [8-16]. You can use a combination of numbers, lowercase, uppercase and special character for your password with at least two kinds of them contained." An "OK" button is located at the bottom right of the form.

Figure 3. 1 Activation Interface

3. Create a password and input the password into the **Password** text field.

STRONG PASSWORD RECOMMENDED– We highly recommend that you create a strong password of your own choosing (using 8-16 characters, including upper case letters, lower case letters, numbers, and special characters) in order to increase the security of your product. And we recommend that you reset your password regularly, especially in the high security system, resetting the password monthly or weekly can better protect your product.

4. Confirm the password.
5. Click **OK** to activate the device.

3.2 Activating via Client Software

The client software is versatile video management software for multiple kinds of devices.

Get the client software from the supplied disk or the official website, and install the software according to the prompts.

Follow the steps to activate the camera.

Steps:

1. Run the client software and the control panel of the software pops up, as shown in the figure below.

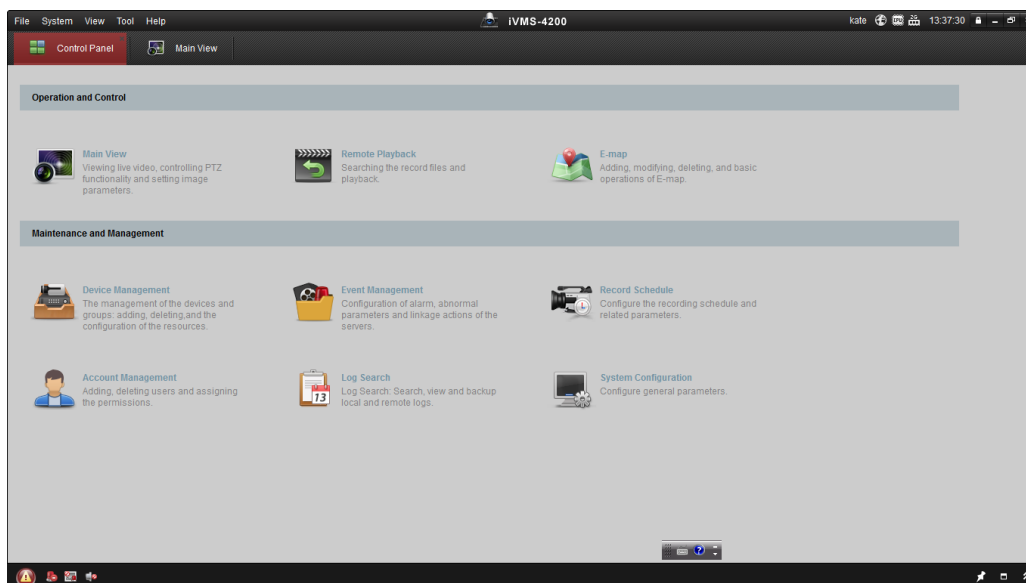


Figure 3. 2 Main Interface

2. Click the **Device Management** icon to enter the Device Management interface, as shown in the figure below.

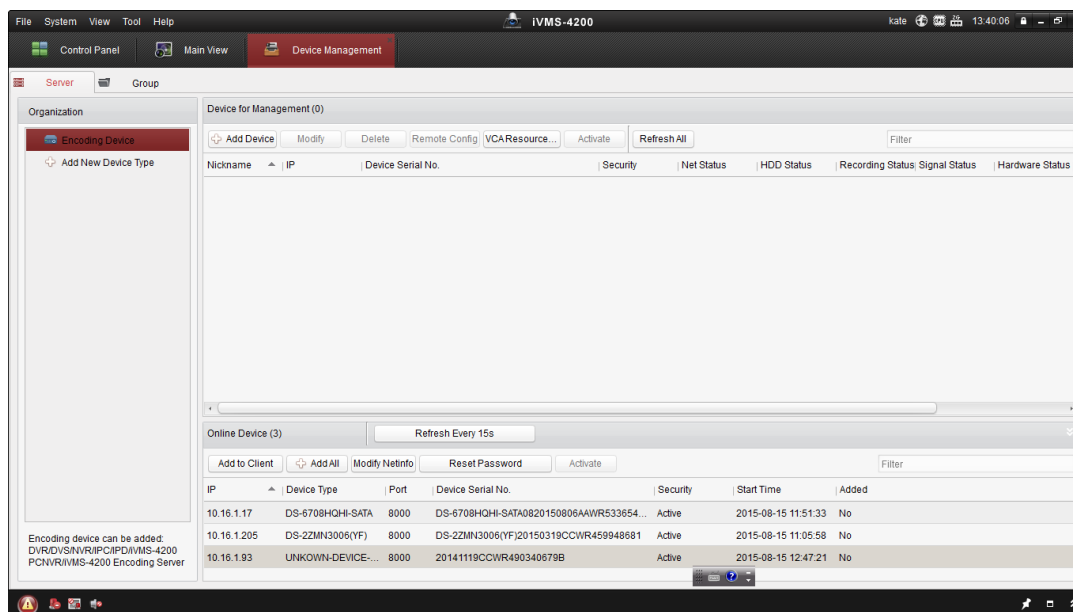


Figure 3. 3 Device Management

3. Check the device status from the device list, and select an inactive device.
4. Click **Activate** to pop up the Activation interface.
5. Create a password and input the password in the password field, and confirm the password.

! STRONG PASSWORD RECOMMENDED– We highly recommend that you create a strong password of your own choosing (using 8-16 characters, including upper case letters, lower case letters, numbers, and special characters) in order to increase the security of your product. And we recommend that you reset your password regularly, especially in the high security system, resetting the password monthly or weekly can better protect your product.



Figure 3. 4 Activation Interface

6. Click **OK** to start activation.
7. Click **Modify Netinfo** to pop up the Network Parameter Modification interface, as shown in the figure below.

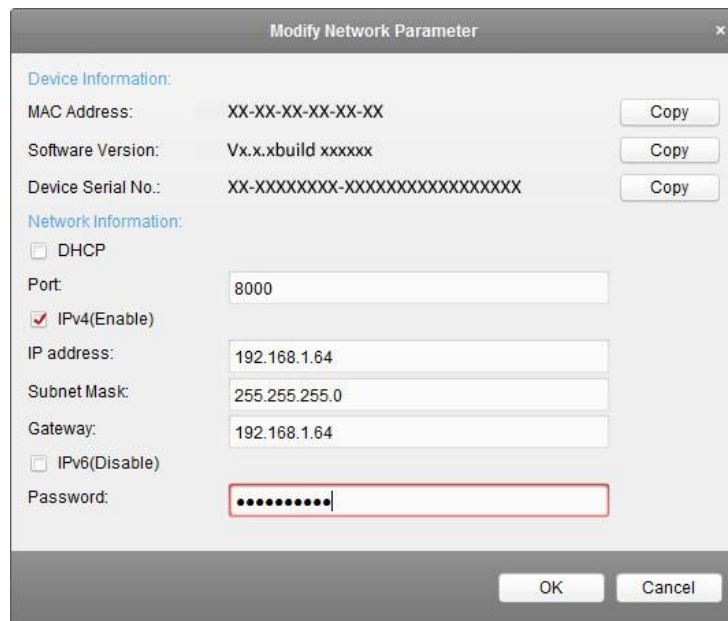


Figure 3. 5 Modify Network Parameter

8. Change the device IP address to the same subnet with your computer by either modifying the IP address manually or checking the checkbox of Enable DHCP.
9. Input the password to activate your IP address modification.

Chapter 4 Access via Web Browser

The device can also be accessed by WEB Browser for configuration and operation. The supported WEB browsers include: Internet Explorer 6/7/8/9, Firefox 3.5 and above, Chrome 8 and above, Safari 5.0.2 and above, Windows XP SP1 and above (32-bit).

4.1 Login

Open WEB browser, input the IP address of the device (e.g., <http://192.168.1.64>) and then press the **Enter** key on PC. The login interface is displayed.



When the HTTPS feature is enabled, the system will use the HTTPS login mode (e.g., <https://192.168.1.64>) by default. You can also input <http://IP address/index.asp> (e.g., <http://192.168.1.64/index.asp>) if you want to use HTTP mode to log into the device.

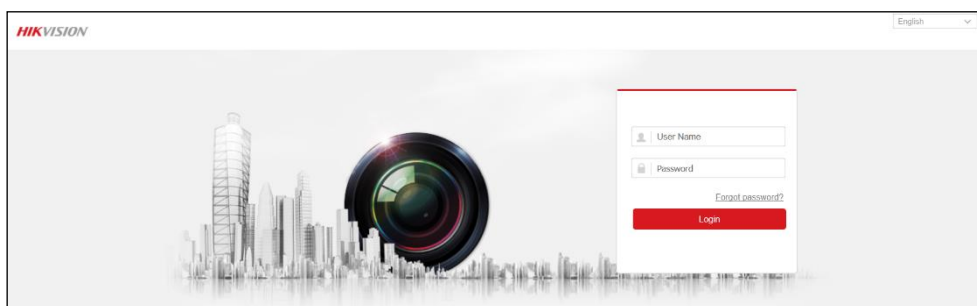


Figure 4. 1 Login Page

Input the user name and password to log into the system.



- In the Login dialog box, if you have entered the wrong password for 7 times for the admin user or 5 times for the normal user, the current user account will be locked for 60 seconds.
- You should download and install the plug-in for the first time to use.

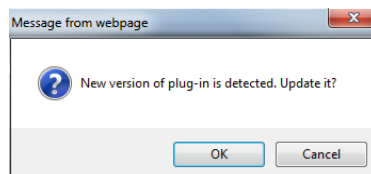


Figure 4. 2 Message from Webpage

4.2 Starting Live View

1. In the live view window, select a playing window by clicking the mouse.

2. Double-click a camera from the device list to start the live view.

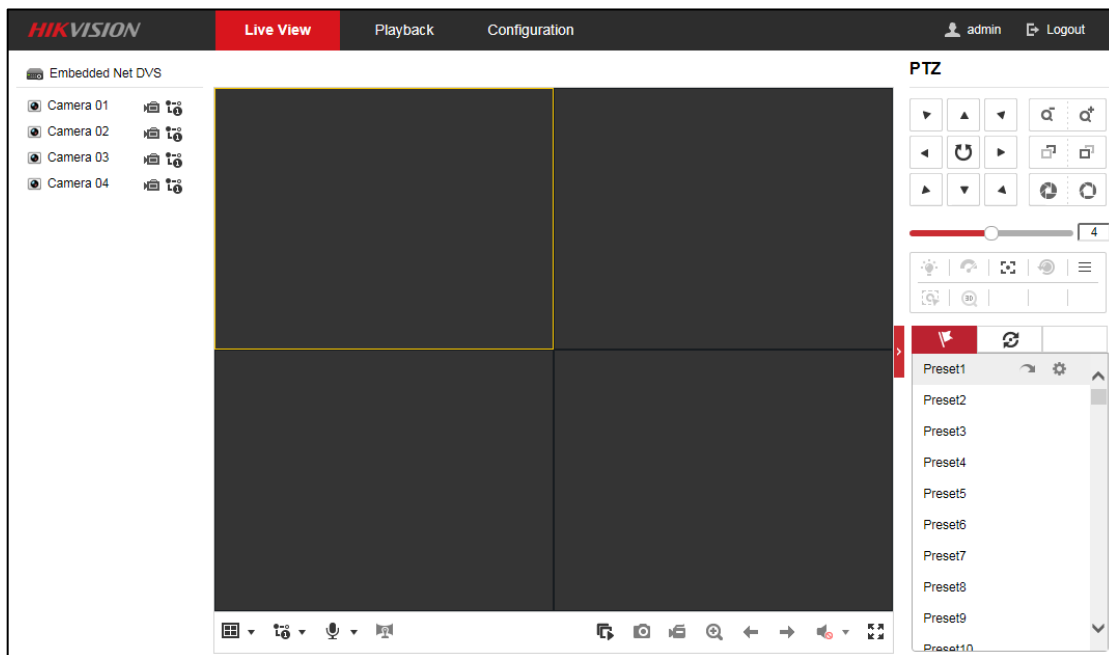









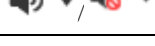



Figure 4. 3 Start Live View

3. You can click  on the toolbar to start the live view of all cameras on the device list.

Refer to the following table for the description of buttons on the live view window:

Table 4.1 Description of Toolbar

Icon	Description
	Select the window-division mode with 1/4/9/16 split screens
	Start/Stop live view
	Select main stream or sub-stream
	Start/Stop two-way audio
	Capture pictures in live view mode
	Manually start/stop recording
	Enable e-PTZ
	Previous/Next page
	Audio on/off
	Switch to full-screen live view mode.



Before using two-way audio function or recording with audio, please select the **Video Type** to **Video & Audio** under **Configuration > Video/Audio > Video**.

4.3 Operating PTZ Control

Before you start:

1. Make sure the encoder is connected with the camera/dome which supports PTZ function. Connect the *R+* and *R-* terminals of the pan/tilt unit or speed dome to RS-485 T+ and RS-485 T- terminals of the device respectively.
2. The baud rate, PTZ control and address configured in the **RS-485 Settings** interface (**Remote Configuration > Serial Port Settings > 485 Serial Port**) must be the same with the parameters of the connected pan/tilt unit or speed dome.

Operating PTZ Control

In live view mode, you can use the PTZ control buttons to realize pan/tilt/zoom control of the camera lens.

There will be 8 directional buttons (up, down, left, right, upper left, upper right, bottom left, bottom right) on the display window when the mouse is located in the relative positions.

Click on the directional buttons to control the pan/tilt movement.

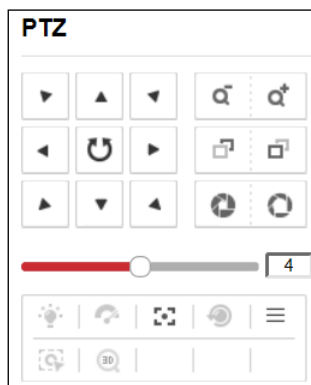










Figure 4. 4 PTZ

Click the zoom/iris/focus buttons to realize lens control.

Refer to the following table for description of PTZ control buttons:

Table 4.2 Description of PTZ Control Buttons

Button	Description
	Zoom in/out
	Focus near/far
	Iris +/-
	Light on/off
	Wiper on/off
	Adjust speed of pan/tilt movement
	Auxiliary focus
	Initialize lens

☰	Adjust speed of pan/tilt movements
🔄	Start Manual Tracking
🔍	Start 3D Zoom

4.4 Recording

Before you start

Make sure the Encoder is connected with SD card or network disk, and the SD card or network disk has been initialized for the first time to use.

Two recording types can be configured: Manual and Scheduled. The following section introduces the configuration of scheduled recording.

Steps:

1. Go to **Configuration > Storage > Schedule Settings > Record Schedule** to enter record schedule settings page.

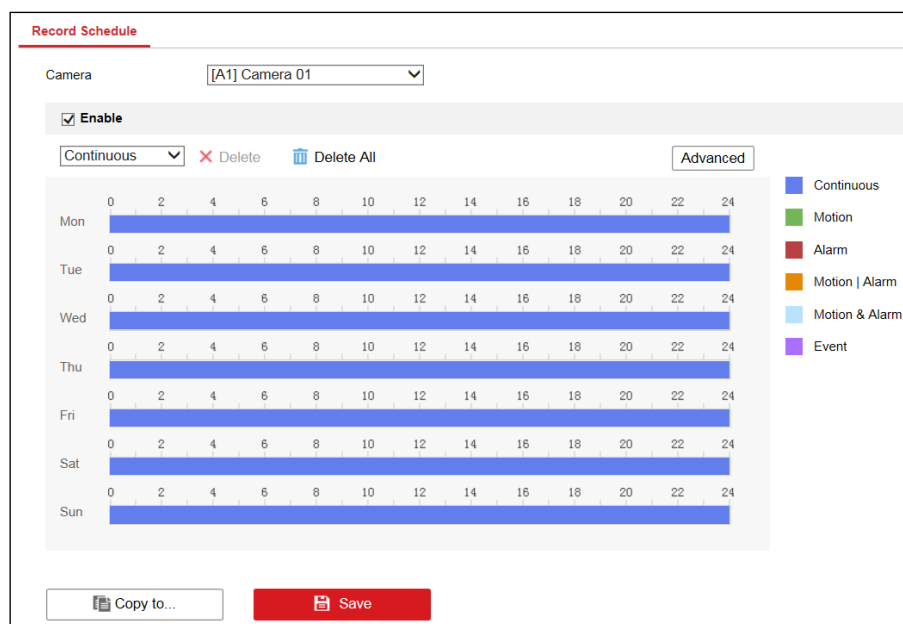


Figure 4.5 Record Schedule Settings

2. Select the camera to configure the record schedule.
3. Check the checkbox of **Enable** to enable scheduled recording.
4. Select a **Record Type**. The record type can be Continuous, Motion Detection, Alarm, Motion | Alarm, Motion & Alarm, and Event.
5. Drag the mouse on the time bar to set the record schedule.
6. Click **Advanced** to configure advanced record parameters.
7. If you want to copy the record schedule settings of the current camera to other cameras, click **Copy to** to copy the settings.
8. Click **Save** to save the settings.

4.5 Playback

Purpose:

The recorded video files can be remotely played back through the WEB browser.

Steps:

1. Click **Playback** on the menu bar to enter playback interface:

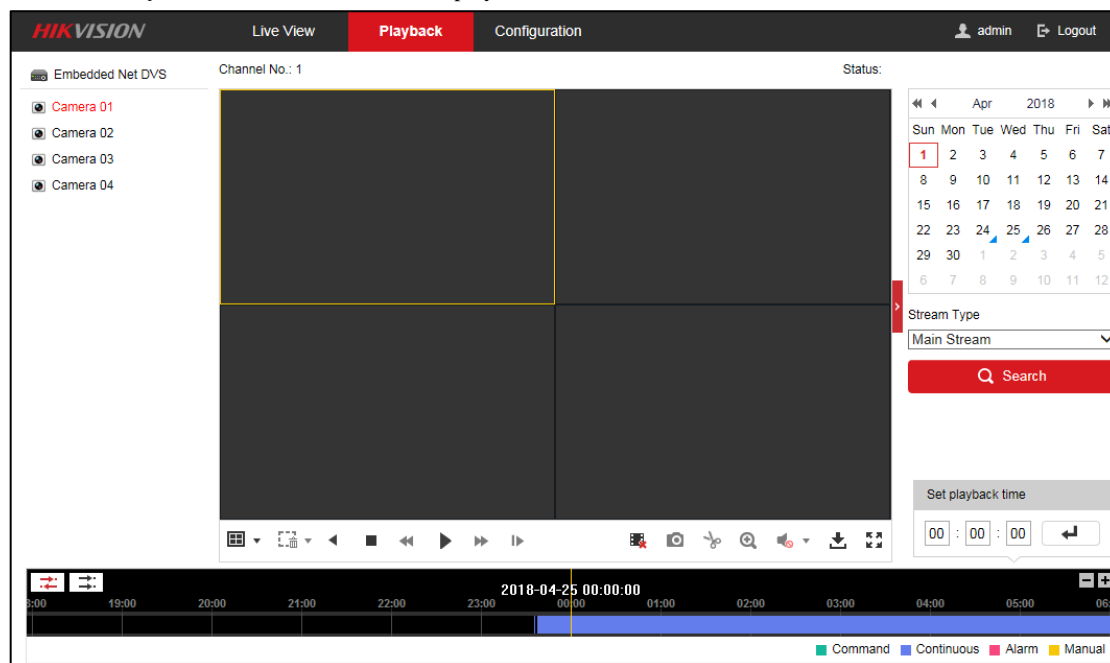


Figure 4. 6 Playback

2. Click the camera from the device list for playback.
3. Select the date from the calendar.
4. Select the **Stream Type**.
5. Click **Search**.

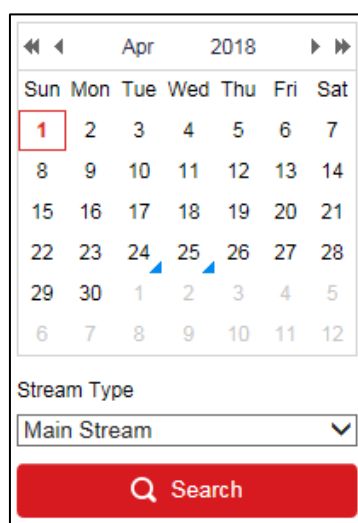


Figure 4. 7 Select Date and Stream Type for Search










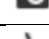
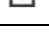
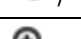

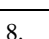
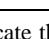

- Click  to play the video file searched on the current date.
- Use the buttons on the toolbar to operate in playback mode



Figure 4. 8 Toolbar

Table 4. 1 Description of Toolbar Icons

Icon	Operation	Icon	Operation
	Select window-division mode		Reverse playback
	Play/Pause		Stop playing
	Slow forward		Fast forward
	Play by single frame		Stop all channels from playing
	Capture pictures in playback mode		Download video files
	Start/Stop clipping video files		Audio on/off
	Enable e-PTZ		Full screen

- You can drag the progress bar with the mouse to locate the exact playback point, or input the time and click  button to locate the playback point.

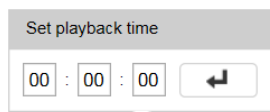


Figure 4. 9 Playback Point



Figure 4. 10 Progress Bar

The color of the video on the progress bar stands for the different video types.

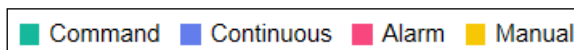
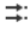



Figure 4. 11 Video Types

- (Optional) Click  to realize synchronous playback. Up to 4 cameras can be played back simultaneously. Click  to stop synchronous playback.

4.6 Log

Purpose:

The operation, alarm, exception and information of the device can be stored in log files, which can be viewed and exported at any time.

Before you start

The Log function can be realized only when the Encoder is connected with SD card or network disk. And make sure the SD card or network disk has been initialized for the first time to use.

Steps:

1. Go to **Configuration > System > Maintenance > Log**.
2. Set the log search conditions to refine your search, including the **Major Type**, **Minor Type**, **Start Time** and **End Time**.
3. Click **Search** to start searching log files.
4. The matched log files will be displayed on the list shown below.



Up to 2000 log files can be displayed each time.

Upgrade & Maintenance Log

Major Type: Minor Type:

Start Time: End Time:

Log List							<input type="button" value="Export"/>
No.	Time	Major Type	Minor Type	Channel No.	Local/Remote User	Remote Host IP	
1	2017-08-24 09:24:14	Exception	HDD Error	17			
2	2017-08-24 09:24:14	Information	HDD Information	1			
3	2017-08-24 09:24:14	Exception	HDD Error	18			
4	2017-08-24 09:24:14	Operation	Power On				
5	2017-08-24 09:24:14	Information	Start Record	A1			
6	2017-08-24 09:24:14	Information	Start Record	A2			
7	2017-08-24 09:24:14	Information	Start Record	A3			
8	2017-08-24 09:24:14	Information	Start Record	A4			
9	2017-08-24 09:24:14	Information	Start Record	A5			
10	2017-08-24 09:24:14	Information	Start Record	A6			
11	2017-08-24 09:24:14	Information	Start Record	A7			
12	2017-08-24 09:24:14	Information	Start Record	A8			

Total 107 Items << < 1/2 > >>

Figure 4. 12 Search Log

5. You can click **Export** to save the searched log files to local directory.



See Far, Go Further