



Because it matters

# InstaShow

”Immediately plug and display Full HD presentations wirelessly  
for seamless teamwork”

Daniel Assarson  
BenQ Nordic  
April, 2016



# Benefits for End Users & ITS (IT avd köpande ftg)



## True Plug & Play Corporate Wireless Presentation for the Meeting Room

### Simple

One button to present

Extended Desktop  
Win/OS X

No SW to install/run

HDMI standard  
for PRJ/PDP

Present or Video one  
key control

Connectivity widely

Audio/Video  
support

Web management

Group meeting  
for 8

Low power mode  
(USB A2.0)

Simple pairing  
Join anytime

### Quick

<3 sec  
to take turn

802.11ac  
High speed wifi

Wifi Reconnect

Wifi channel auto  
selection

### High Performance

8 meter transmission

1080p  
video quality

Low Latency  
React promptly

Hardware encode/decode  
Good performance for old/new NB

Security Protect

SmartEDID  
Always best  
resolution

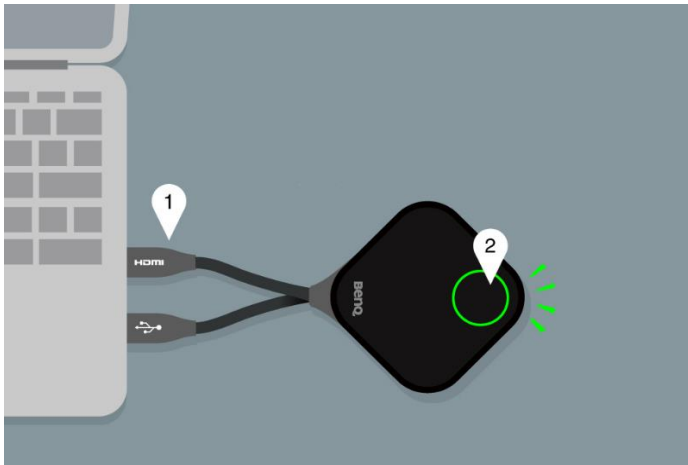
Power saving  
HDMI standby  
Network standby

### Professional

Cradle for tidy  
room

# Simple – One Button to present

- User just plug cable and display wireless presentation.
  - Step0: Power on the projector and InstaShow host (= receiver) accordingly.
  - Step1: plug HDMI cable and USB cable into your NB HDMI port and USB 3.0 port and wait for LED to become green.
  - Step2: click the button to display. Blue color = live presentation on-going.
- Then you can enjoy the Presentation!



# Simple – No SW Installation/Execution



- **No Software Installation:** InstaShow has a zero footprint, leaving no software on your PC or Mac. There's no need for setup or configuration.
- **No Software Execution:** No waiting for software to launch. Just plug and present.
- **No Driver:** No driver is needed

# Simple – Presentation/Video Mode, One Key Control



- One simple push of the mode key switches from clear **presentation mode** to smooth **1080p video mode** to quickly switch the viewing experience for precise productivity or seamless streaming playback.
- Presentation mode: Frame rate 15
- Video mode: Frame rate 30 (upgraded to 60 by host chipset before displaying contents)





# Simple – Easy Pairing

- When a new member would like to join the meeting but the room's buttons are not enough, he can get other room's button to join the meeting immediately.
- How?
  - User push the Host “pairing key” 5 sec and push Button “mode key” 5 sec then Host and Button will be paired automatically. Host pairing mode time out after 2 mins.
  - If the Host is ceiling mount, user can ask for ITS help to setup “Host” to pairing and push Button “mode key”. 5 mins to pair.
- Note: When one button is pairing, all the presentation will be stopped.

# Simple – Win/OSX Extended Desktop



- Keep your presenter view, notes, and backup data on your laptop screen while presenting to the wireless screen with Extended Desktop in both Windows and OS X.





# Simple – Any NB is compatible



- Presenters always bring different notebooks.
- WDC I0 supports any NB, no matter which OS. It solves the complex setup steps for NB wireless presentation.
  - The NB needs the HDMI port and USB Type A 3.0 port. Major brands of NB (Lenovo, HP, Dell, Acer and Asus) supports HDMI port and USB 3.0 port.
  - 78% NB in 2015 has HDMI port.



# Simple – MacBook 12” case



USB C / HDMI / USB

USB 3.1 Gen 1 (高達 5 Gbps)

原生 DisplayPort 1.2 視訊輸出

VGA 輸出，使用 USB-C VGA 多連接埠轉接器 (另售)

HDMI 視訊輸出，使用 USB-C 數位影音多連接埠轉接器 (另售)



USB C

- USB-C to HDMI adapter
- Connect HDMI and USB cable into adapter



# Simple – MacBook Air 11” & 13” case



- DisplayPort to HDMI Adapter
- Connect HDMI into adapter and USB cable into MacBook.



- 兩個 USB 3 連接埠 (可達 5 Gbps)
- Thunderbolt 2 連接埠 (可達 20 Gbps)
- MagSafe 2 電源連接埠

- 兩個 USB 3 連接埠 (可達 5 Gbps)
- Thunderbolt 2 連接埠 (可達 20 Gbps)
- MagSafe 2 電源連接埠
- SDXC 卡插槽

# Simple – MacBook Pro 13” & 15” case



- MacBook Pro has HDMI and USB3 side by side. InstaShow button can plug directly.

MagSafe 2 電源連接埠

兩個 Thunderbolt 2 連接埠 (可達 20 Gbps)

兩個 USB 3 連接埠 (可達 5 Gbps)

HDMI 連接埠

耳機連接埠

SDXC 卡插槽

Apple Thunderbolt 對 FireWire 轉接器 (另售)

Apple Thunderbolt 對 Gigabit 乙太網路轉接器 (另售)





# Simple – Web Management

- ITS can control the InstaShow by Web management via LAN or 5G wifi device.
  - If InstaShow is connected to LAN, ITS can sit in office desk to remote control InstaShow easily.
  - When ITS checks every room's InstaShow Host, they can control the Host by NB with wireless 802.11ac immediately.
- Web function
  - Information
  - WAN
  - Wireless network
  - Pairing
  - Advanced setting
  - Scheduling

# Simple – HDMI 1.4 compatibility



- WDC10 works with any display device with standard HDMI 1.4 (Juni 2009). Not only with BenQ projectors/displays.



# Simple – Low Power Mode

- InstaShow USB cable needs to be connected to USB3.0 to get enough power (5V, 0.9A). Some users still use NB bought before 2014 with USB Type A 2.0 (5V, 0.5A).
- ITS can set up RX to low power mode by Web if majority of users have old NB with USB 2.0 port.
- After ITS setup “Low power mode”, user cannot switch “Presentation mode” or “Video mode” by Mode Switch Button but still have clear image quality.
- **Low power mode: Frame rate TBD.**





# Quick – <3 secs to take turn

- When user A and user B NB resolution is the same (ex: 1080p), 1 second to switch from one presenter to the other.
- If user A and user B NB resolution is not the same (ex: user A 1080p, user B 720p ), 3~4 seconds to switch.
- The switch timing is also depending on display (projector/PDP) hardware and software solution.





# Quick – 802.11ac wifi connection

- High Bandwidth: InstaShow uses 802.11ac wifi transmission standard which speed is very high to ensure wifi presentation smoothly.
- Different channel: Currently 802.11ac is a relatively rare spec. Most router or mobile phone are not using 802.11ac, but only using 802.11n. When user presents in a wifi traffic busy environment, InstaShow wifi performance can be relatively smooth.

Wifi protocol	Bandwidth GHz	debit Mbit/s
802.11a	2.4G	54M
802.11b	5G/2.7G	11M
802.11g	2.4G	54M
802.11n	2.4G/5G	150M
802.11ac	5G	866M

# Quick – Wireless Re-connection



- If for any reason the presenter is disconnected, the button will automatically re-connect.
- Check button LED color to follow the status:
  - **Red**: presentation disconnected, button will re-connect automatically.
  - **Green**: button reconnected, then press the button.
  - **Blue**: presentation is back again.

# Quick – Wifi Channel Auto Selection

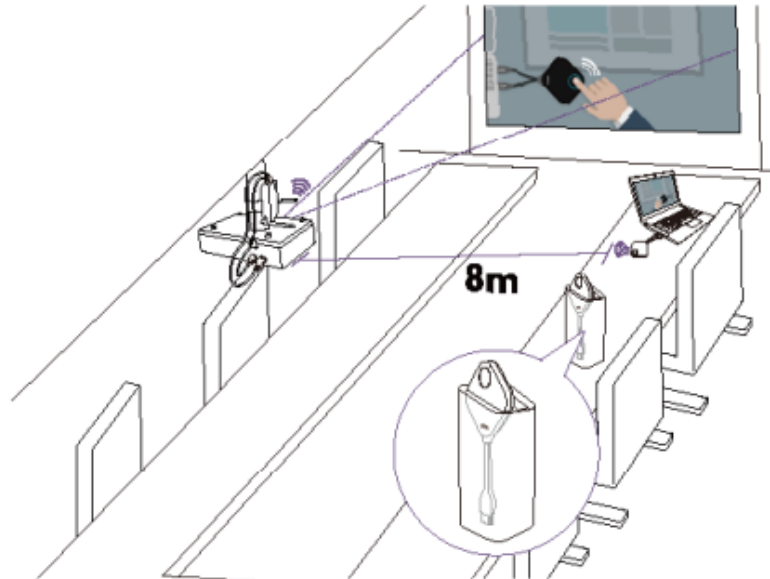


- InstaShow Host launches wifi channel selection when Host boots up.
- It makes sure user always enjoys the smoothest wifi presentation.

# High Performance – 8m Transmission



- InstaShow is suitable for small, middle and large meeting rooms/boardrooms. The transmission distance is 8 meter.



# High Performance – Low Latency



- Low latency <100ms even in “Presentation mode” with high image quality.
  - Quick Mouse Move: When user presents, he needs the mouse moving promptly to point out the key points. InstaShow low latency function fully fulfills the demand.
  - Power point animations: When user presents, he needs the ppt animations playing smoothly. InstaShow low latency function fully fulfills the need.

# High Performance – Smart EDID



- InstaShow knows the display (projector, PDP, monitor, TV) native resolution and tells the NB to let it auto change timing to fix the display timing. So user can always have the best resolution to display.
  - PS: some old NB cannot auto change timing but pop up the “suggestion timing”, user just needs to choose it.

# High Performance – Hardware Encode/Decode



- InstaShow only uses hardware encode/decode technology. So No matter if user plugs it into old NB, it will still perform well in speed and display quality.

# High Performance – Data Security Protection



- InstaShow supports wireless transmission security standard WPA2.
- Also supports the HDCP security to protect presenter's data.
- The WPA2 and HDCP can prevent others to record or steal data from the presentation.



# High Performance – Saving Power



## Network Standby:

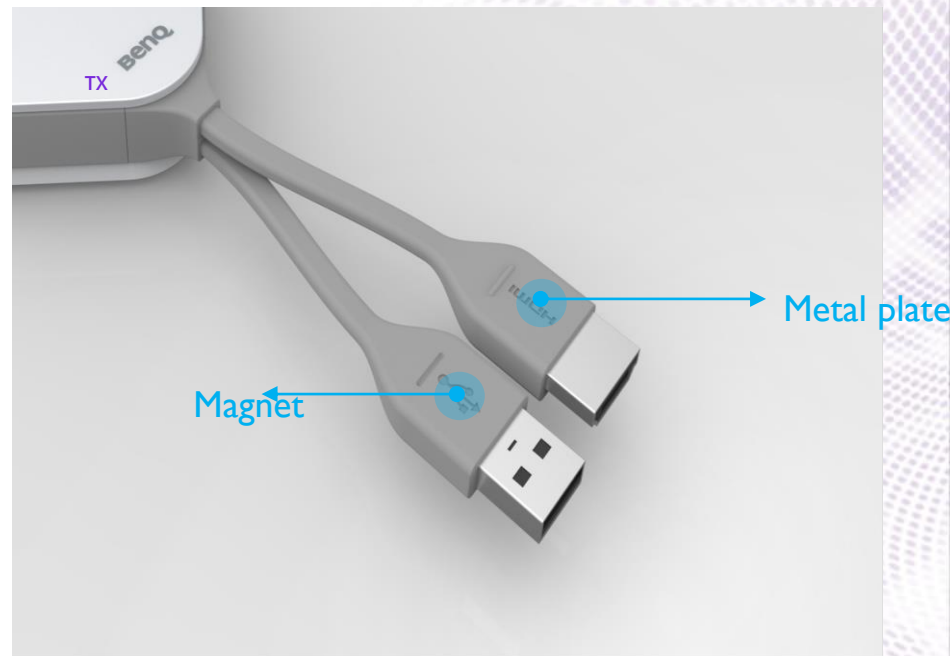
- When users would like to leave the room, all users unplug TX **USB cable**, then it **cuts RX HDMI source**.
  - RX: Then RX goes into network standby mode. Reduce half power.
  - TV/Monitor/Projector: TV/Monitor/Projector go into **screensaver** or **sleeping mode** to save display power.
- When all users have a break and keep all TX connecting (but no one displays, TX LED shows green color), RX will cut the HDMI source to display after 30/60/90 minutes to save RX and display power.
- How to wake up?
  - TX 2 cables connected to NB → RX gets notice from TX → HDMI source output to display

## HDMI Standby:

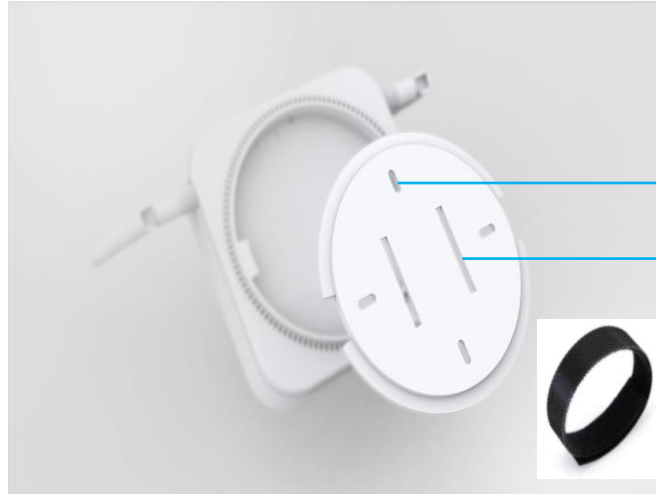
- When users leave the room and power off the display, RX will go into HDMI standby after 10 mins.
- Power decreases down to almost 0W.
- This can save RX life time.



# Packaging and ID



# Packaging and ID - Receiver





# What's in the box

- 2 pcs InstaShow Buttons with internal antenna
- 1 pc InstaShow Host with external antenna
- 1 cradle (for 2 pcs Buttons)
- USB Power cable (150cm) for Host
- AC adapter for Europe
- HDMI cable (80cm) for Host
- USB extended cable (15cm)
- Velcro (Black) for Host

# InstaShow Conclusion

## TOP 9 selling points:

- True Plug&Play: Simply connect WDC10 into your USB and HDMI ports then push the button to start presenting with no waiting for apps or settings.
- No SW Installation/Execution: WDC10 has a zero footprint, leaving no software on your PC or Mac. There's no need for setup or configuration.
- InstaVideo: Convenient button to switch between Presentation and Video Modes for precise productivity or smooth 1080p video.
- Wireless 5G 802.11ac: The latest 5GHz 802.11ac WiFi guarantees extremely smooth wireless streaming without lag or buffering.
- Auto channel selection: to secure a stable connection.
- Video and Audio: Stream 30fps Full HD video and clear stereo sound without cable clutter or complicated driver selection.
- Assured Performance: Peace of mind for consistent wireless presentation performance without relying on your PC.
- Extended desktop: Keep your presenter view, notes, and backup data on your laptop screen while presenting to the wireless screen with Extended Desktop in both Windows and OS X.
- Power host from projector/display: Convenient installation & no need of hard wired power outlet. InstaShow host can be powered from the projector/display using powered USB 1,5A











Because it matters