



# Hybrid ODF Panel

## Termination Panel for the Hexatronic InOne System

---

### Features

- For DIN rail mount
- Small dimension WxHxD 32x145x120mm
- Up to 12 fibers (using 6 x LC duplex cut out slots)
- Supports SC and LC adapters
- Power inlet connector Maxi-fit
- Rating max 120 Vdc, 10 A
- Front serviced

## Application

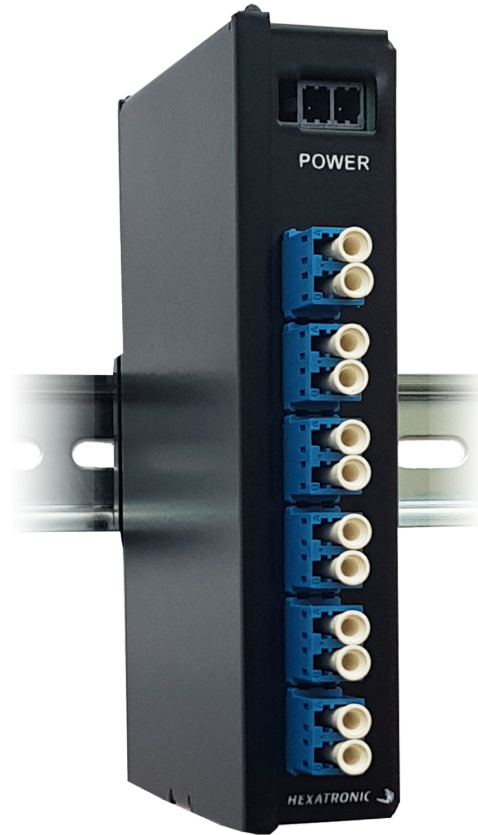
The Hybrid ODF is a part of Hexatronics Powered Fibre System and is optimized for field termination of Hybrid Micro cable.

## Design

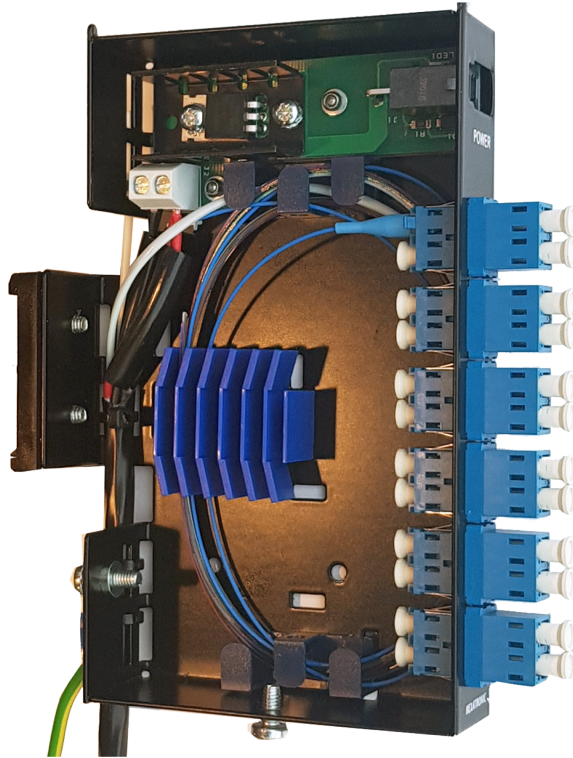
Premounted LC duplex blue adapters and holders for splice protection sleeves enables secure termination to pigtails. Power wires from Micro hybrid cable are terminated to terminal blocks. The unit shall be powered with enclosed power cable cord according to the enclosed installation manual. Power inlet is designed with blocking for faulty polarity connection. Blue LED at power inlet indicate correct powering.

Tool-less mounting of the unit to standard DIN rail ensure fast and smooth installation. The optical performance of the ODF connections used in the Hexatronic systems is ensuring the right quality and stability over time.

## Product Information



Hybrid ODF mounted on DIN-rail



Hybrid ODF mounted with cable

Included materials are:

- Cable ties to fastened the hybrid cable to ODF and protection tube for power cords
- Power cord with MegaFit connector and open end for connection to DC power unit

The termination unit is made of painted Stainless sheet steel. All products are in accordance with RoHS.

## Technical Information

**Product Color** Black

### Items 1

| Item Name                                  | Dimensions [mm] | Weight [kg] |
|--|-----------------|-------------|
| HODF 1kw 6xLCD Hybrid DIN<br>HNCD520225/11 | 145 x 32 x 120  | 0.3         |