

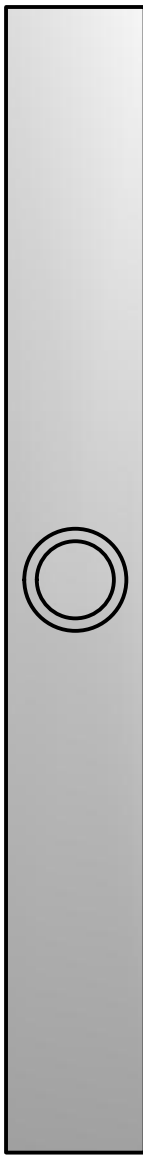
Front



Right



Back



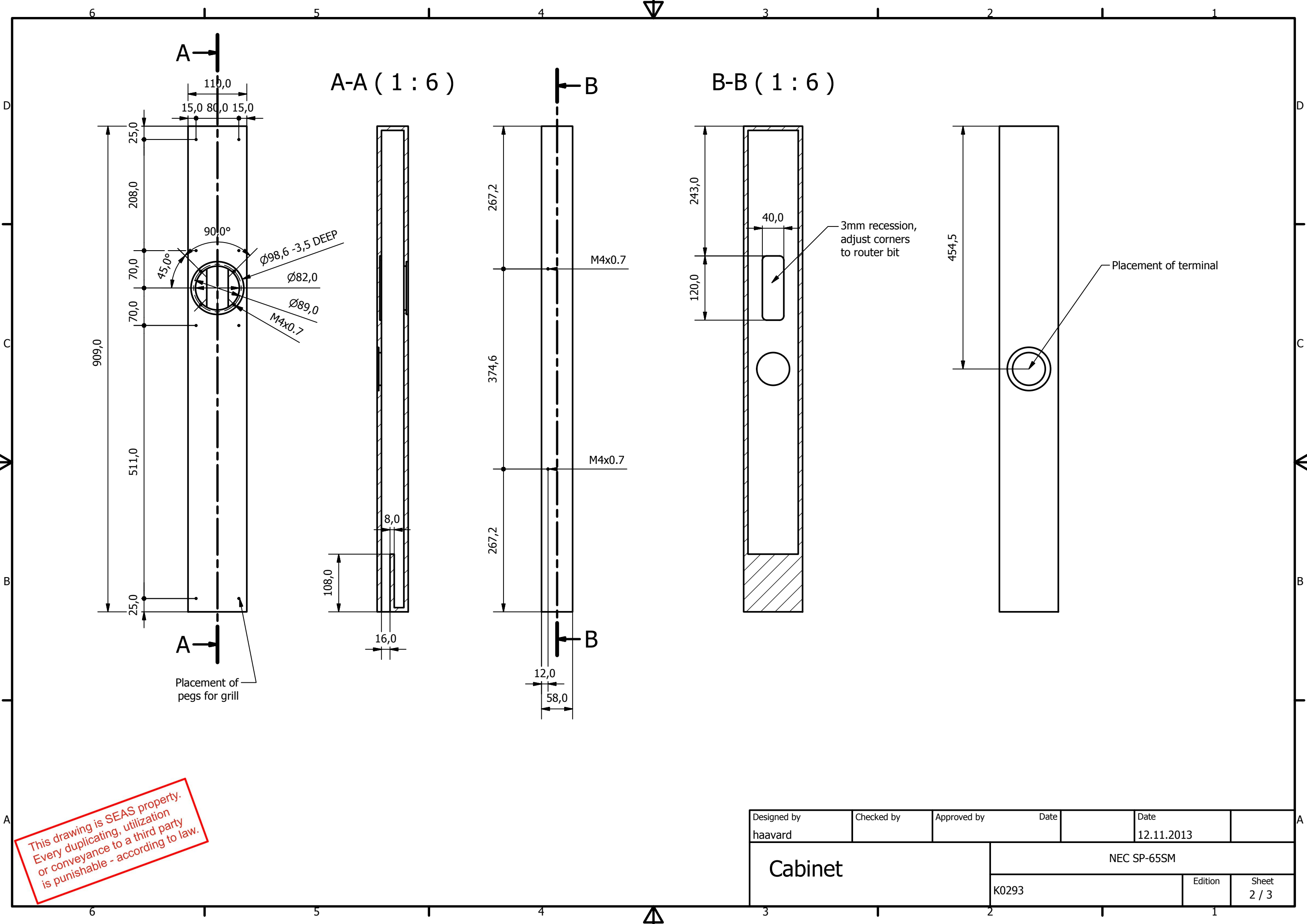
Left



- Shown model is the right version.
- The speaker must be delivered in pairs with a mirrored left version, i.e. the mounting holes must be moved to left side.
- Material: MDF
- Finish: Pantone Hexachrome Black C (alternatively RAL 9011 or RAL 9005)
- Open end of cabinet must be painted black on inside 160mm up.
- Terminal wires with 2.8x0.5mm female FastOn
- Very loosely filled with damping material
- 6mm grill with black textile should be flush with cabinet side panels

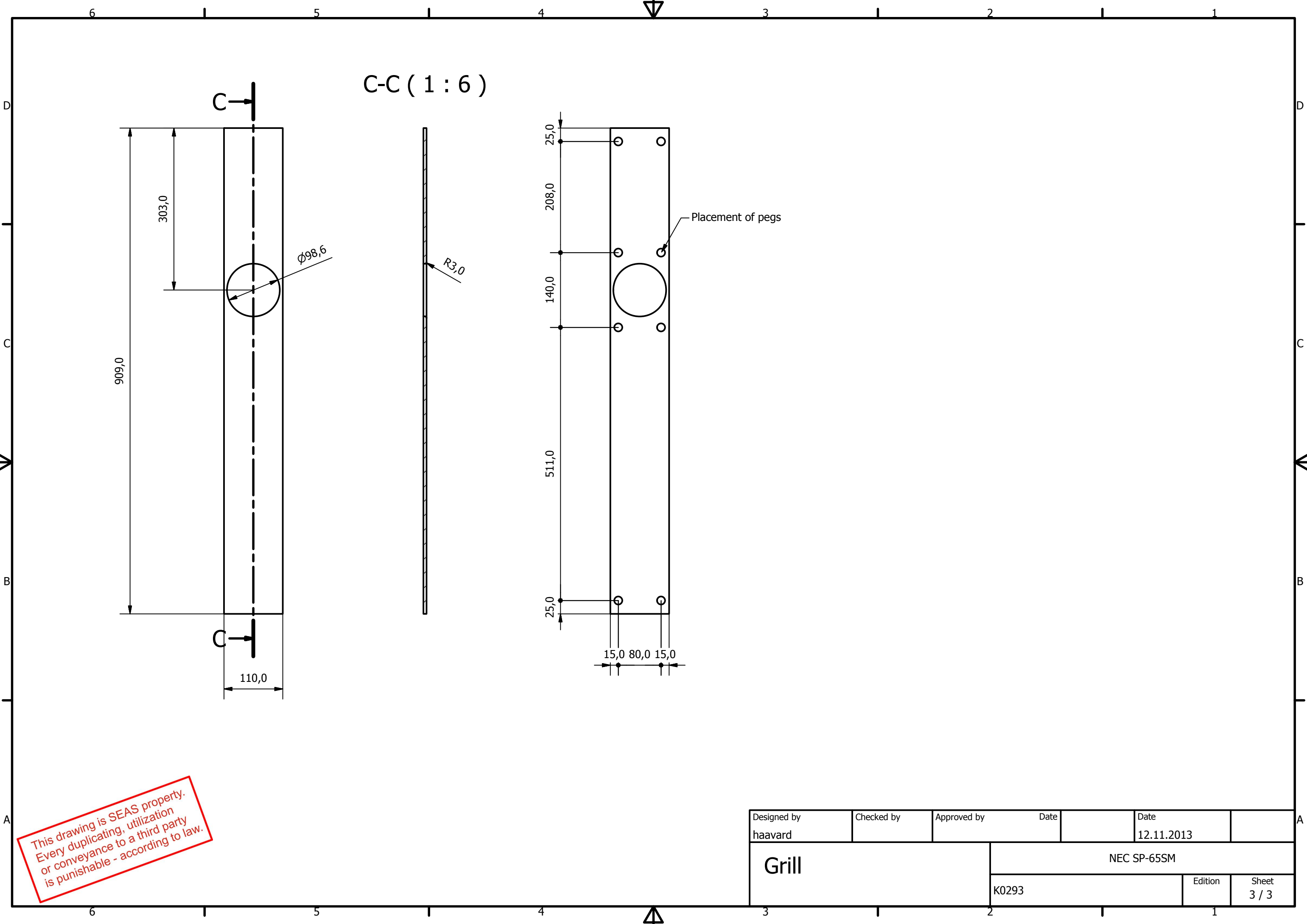
This drawing is SEAS property.
 Every duplicating, utilization
 or conveyance to a third party
 is punishable - according to law.

Designed by haavard	Checked by	Approved by	Date	Date 12.11.2013
		NEC SP-65SM		
K0293		Edition	Sheet 1 / 3	



This drawing is SEAS property.
 Every duplicating, utilization
 or conveyance to a third party
 is punishable - according to law.

Designed by haavard	Checked by	Approved by	Date	Date 12.11.2013	
<h1>Cabinet</h1>			NEC SP-65SM		
			K0293	Edition	Sheet 2 / 3



C-C (1 : 6)

Placement of pegs

This drawing is SEAS property.
 Every duplicating, utilization
 or conveyance to a third party
 is punishable - according to law.

Designed by haavard	Checked by	Approved by	Date	Date 12.11.2013
Grill		NEC SP-65SM		
		K0293	Edition	Sheet 3 / 3